

PDGF-BB Antibody (aa21-70)
Rabbit Polyclonal Antibody
Catalog # ALS16929**Specification**

PDGF-BB Antibody (aa21-70) - Product Information

Application	WB, IHC-P
Primary Accession	P01127
Other Accession	5155
Reactivity	Human, Mouse, Rat
Host	Rabbit
Clonality	Polyclonal
Calculated MW	27283
Dilution	WB~~1:1000 IHC-P~~N/A

PDGF-BB Antibody (aa21-70) - Additional Information**Gene ID** 5155**Other Names**

PDGFB, Becaplermin, PDGF-BB, PDGF-b, SSV, PDGF subunit B, PDGF-2, PDGF2, Proto-oncogene c-Sis, SIS, C-sis, PDGF, B chain

Target/Specificity

Human PDGF-BB / PDGFB

Reconstitution & Storage

PBS, pH 7.2, 0.05% sodium azide. Store at 4°C short term. Aliquot and store at -20°C long term. Avoid freeze-thaw cycles.

Precautions

PDGF-BB Antibody (aa21-70) is for research use only and not for use in diagnostic or therapeutic procedures.

PDGF-BB Antibody (aa21-70) - Protein Information**Name** PDGFB**Synonyms** PDGF2, SIS**Function**

Growth factor that plays an essential role in the regulation of embryonic development, cell proliferation, cell migration, survival and chemotaxis. Potent mitogen for cells of mesenchymal origin (PubMed:26599395). Required for normal proliferation and recruitment of pericytes and vascular smooth muscle cells in the central nervous system, skin, lung, heart and placenta. Required for normal blood vessel development, and for normal development of kidney glomeruli.

Plays an important role in wound healing. Signaling is modulated by the formation of heterodimers with PDGFA (By similarity).

Cellular Location

Secreted. Note=Released by platelets upon wounding

Tissue Location

Expressed at high levels in the heart, brain (sustantia nigra), placenta and fetal kidney. Expressed at moderate levels in the brain (hippocampus), skeletal muscle, kidney and lung

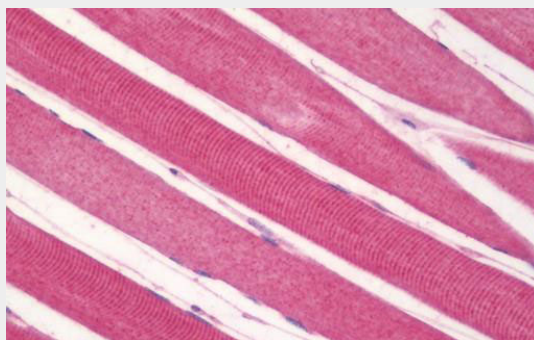
Volume

50 µl

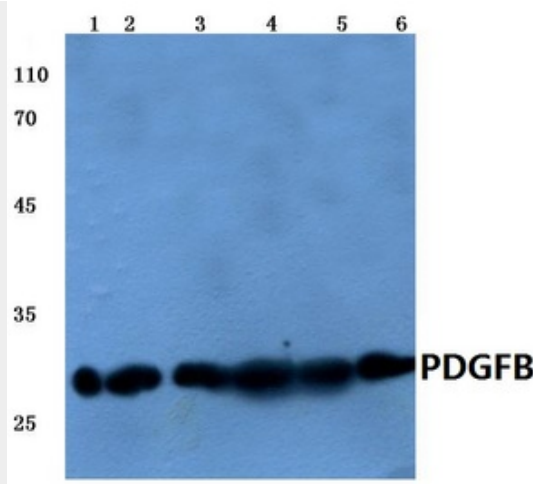
PDGF-BB Antibody (aa21-70) - Protocols

Provided below are standard protocols that you may find useful for product applications.

- [Western Blot](#)
- [Blocking Peptides](#)
- [Dot Blot](#)
- [Immunohistochemistry](#)
- [Immunofluorescence](#)
- [Immunoprecipitation](#)
- [Flow Cytometry](#)
- [Cell Culture](#)

PDGF-BB Antibody (aa21-70) - Images

Anti-PDGF-BB antibody IHC staining of human skeletal muscle.



Western blot analysis of PDGFB pAb at 1:500.

PDGF-BB Antibody (aa21-70) - Background

Growth factor that plays an essential role in the regulation of embryonic development, cell proliferation, cell migration, survival and chemotaxis. Potent mitogen for cells of mesenchymal origin. Required for normal proliferation and recruitment of pericytes and vascular smooth muscle cells in the central nervous system, skin, lung, heart and placenta. Required for normal blood vessel development, and for normal development of kidney glomeruli. Plays an important role in wound healing. Signaling is modulated by the formation of heterodimers with PDGFA (By similarity).

PDGF-BB Antibody (aa21-70) - References

- Josephs S.F., et al. Science 225:636-639(1984).
- Collins T., et al. Nature 316:748-750(1985).
- Ratner L., et al. Nucleic Acids Res. 13:5007-5018(1985).
- Rao C.D., et al. Cold Spring Harb. Symp. Quant. Biol. 51:959-966(1986).
- Rao C.D., et al. Proc. Natl. Acad. Sci. U.S.A. 83:2392-2396(1986).